



AMERICAN & OHIO LOCOMOTIVE CRANE CO. INC.

**811 Hopley Avenue
P.O. Box 511
Bucyrus, Ohio 44820**

800-993-6446 ~ 419-562-6010 ~ Fax: 419-562-2565 ~ www.aolcrane.com

OEM Product Support Bulletin

No. 19

DATE: September 17, 2013 (revision date)

SUBJECT: TRACTION GEAR CASE SUPPORT ASSEMBLY

RATING: **DIRECTIVE**
(Action is required) **ALERT**
(Safety Issue)

INFORMATION **PRODUCT IMPROVEMENT**
(Enhanced Product)

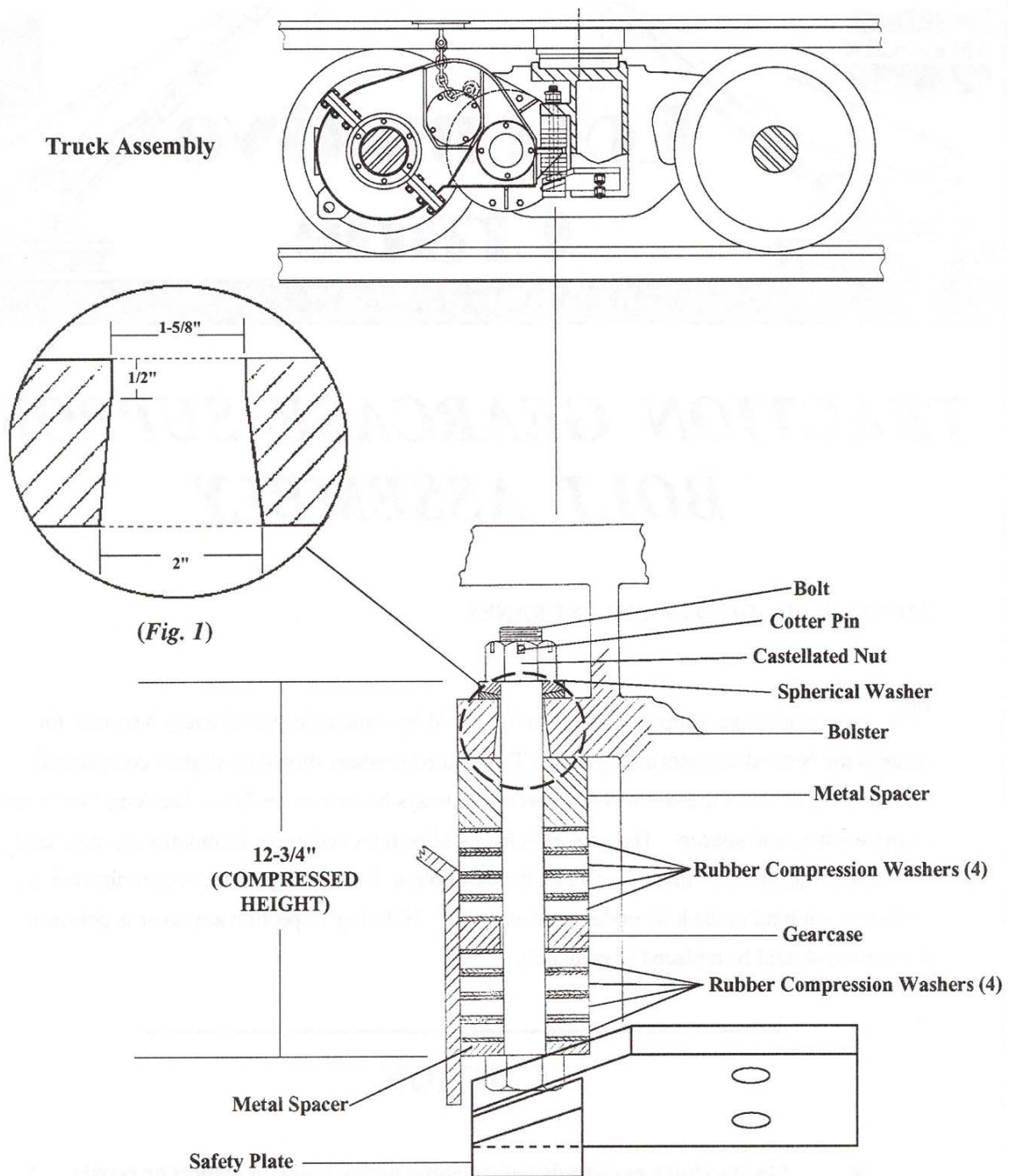
Machine Model (s): All Ohio DE Series Locomotive Cranes

Serial Numbers: All Ohio DE Series Locomotive Cranes

Summary: Failure to maintain to inspect may result in component damage, personal injury and/or death.

Operational Impact:

- > Traction Gear Case Support must be inspected every 3 months for wear to the washer and spacers
- > The bonded washers should be slightly compressed with no play between the washer and the spacers.
- > Be sure to verify the stack up sequence of washers and spacers.
- > The Anchor bolt should be removed every 12 months and inspected for wear to the shank.
- > Check the cast hole in bolster (figure 1) for proper dimensions.
- > The bolt must not bind in the hole under traction toque.
- > If wear is detected, parts should be replaced immediately.
- > Always reinstall the cotter pin for the support bolt nut.



Never lay under the Gear Case or Motor while servicing this support!